

# RAMBo DRIVER INSTALLATION

## WINDOWS 8

Windows 8 by default will not let you install unsigned drivers. This means that a Windows 8 computer will not recognize the RAMBo board unless you follow these steps to start Windows 8 in "Disable Driver Signature Enforcement" mode.

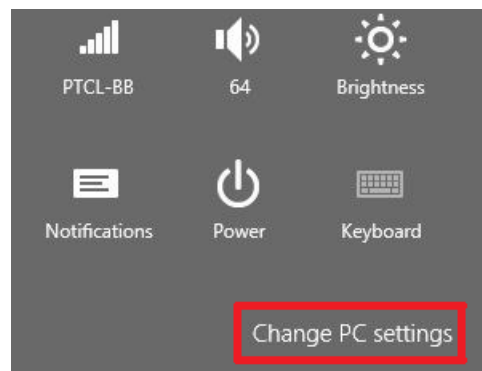
### 1 SETTINGS BUTTON

Move the cursor to the bottom right corner of the screen and select the GEAR icon "Settings."



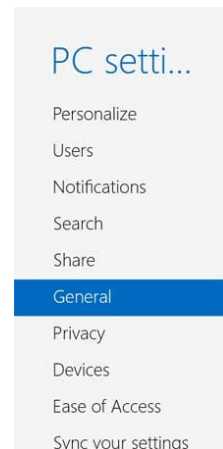
### 2 CHANGE PC SETTINGS

Select "Change PC Settings"



### 3a GENERAL

If you see "General" come up, select it and proceed to step 4

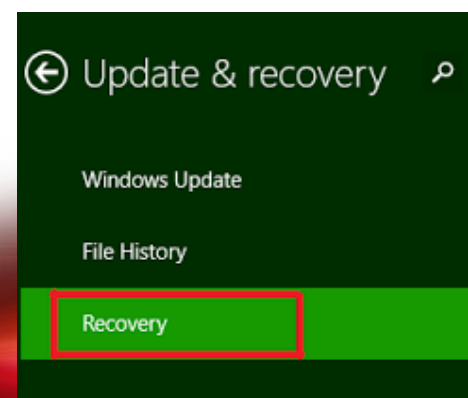
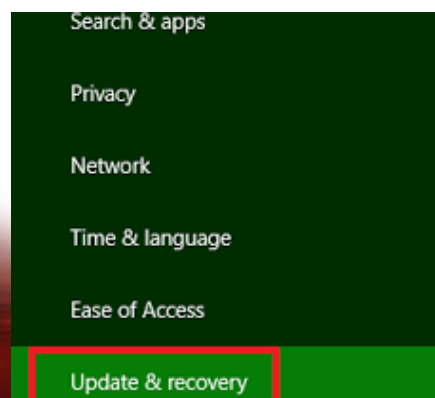


### 3b UPDATE AND RECOVERY

If you do not see the "General" option, select "Update and Recovery."

### 3b RECOVERY

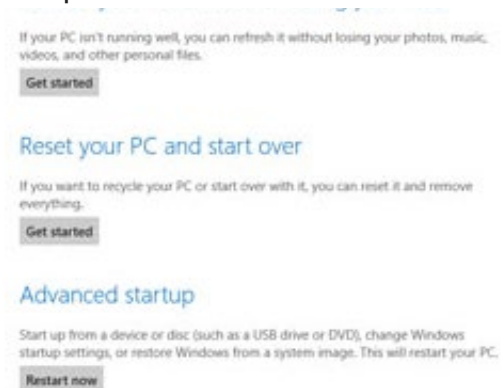
Select "Recovery"



# RAMBo DRIVER INSTALLATION

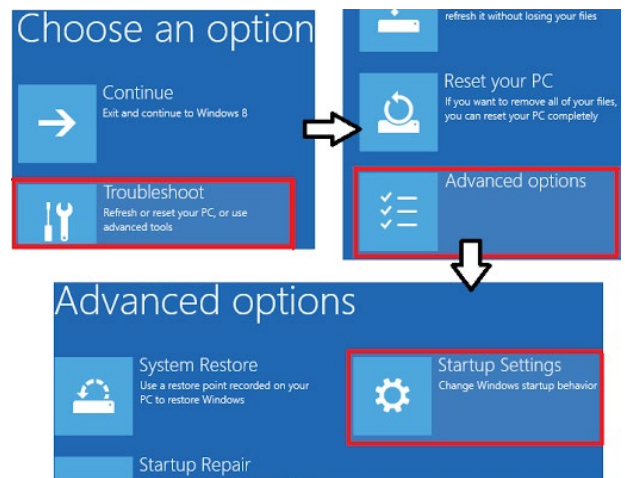
## 4 ADVANCED STARTUP > RESTART NOW

Scroll down and select "Restart Now" under "Advanced Startup."



## 5 TROUBLESHOOT > ADVANCED OPTIONS > STARTUP SETTINGS

After selecting "Startup Settings," select "Restart."



## 6 RESTART > CHOOSE OPTION 7

The PC will restart. Upon startup, click the "7" key on your keyboard.

## 7 INSTALL RAMBo DRIVER

PROCEED TO INSTALL THE RAMBo driver

### Startup Settings

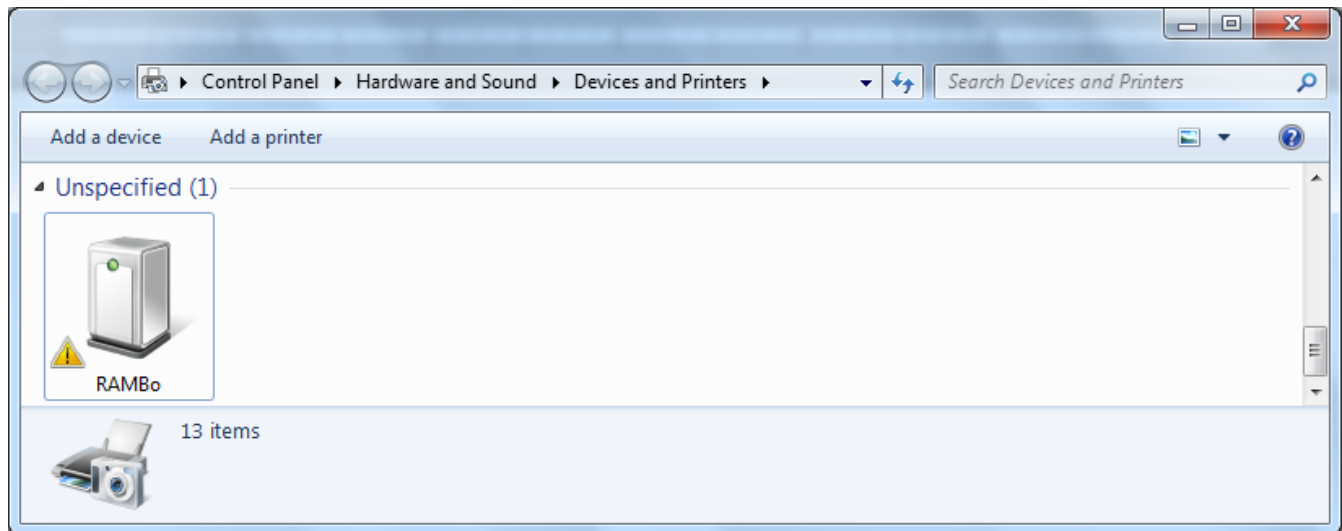
Press a number to choose from the options below:

Use number keys or function keys F1-F9.

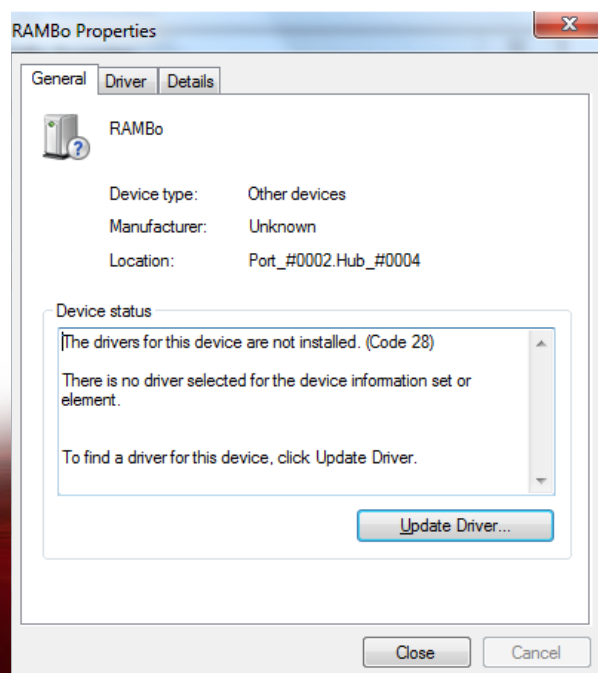
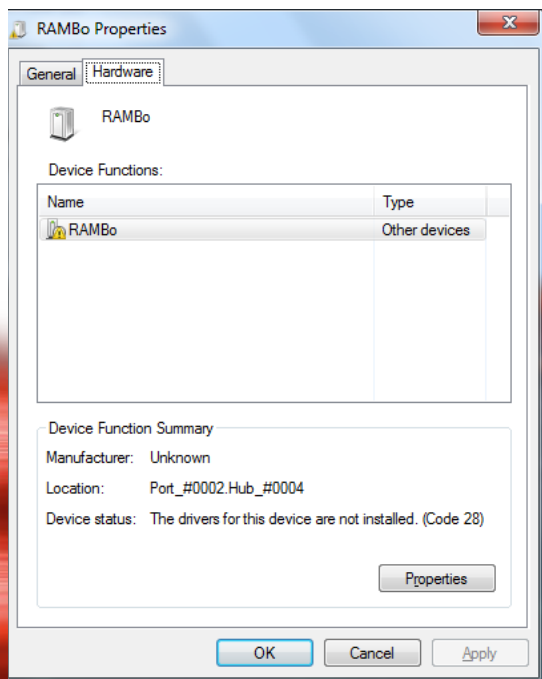
- 1) Enable debugging
- 2) Enable boot logging
- 3) Enable low-resolution video
- 4) Enable Safe Mode
- 5) Enable Safe Mode with Networking
- 6) Enable Safe Mode with Command Prompt
- 7) Disable driver signature enforcement
- 8) Disable early launch anti-malware protection
- 9) Disable automatic restart after failure

# RAMBo DRIVER INSTALLATION(PC ONLY)

- 1** Only PC computers need the RAMBo driver.
- 2** Plug the printer into the computer with the USB cable. Insert the Airwolf 3D USB drive (came with the printer) into the computer.
- 3** In the "Control Panel," open "Devices and Printers." Under "Unspecified," you should see a device labeled "RAMBo." Right click the device and select "Properties."

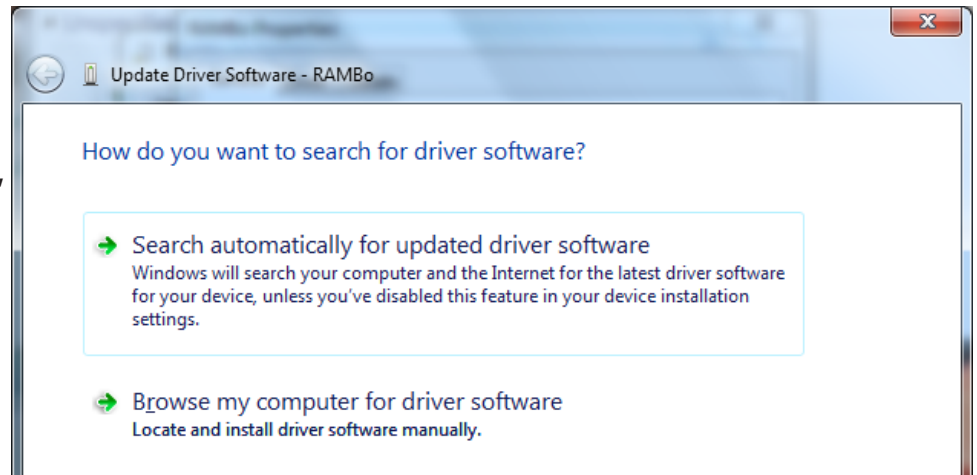


- 4** A second window will appear. Under the second tab labeled "Hardware," select "Properties."
- 5** A third window will appear. Under the first tab labeled "General," select "Update Driver."

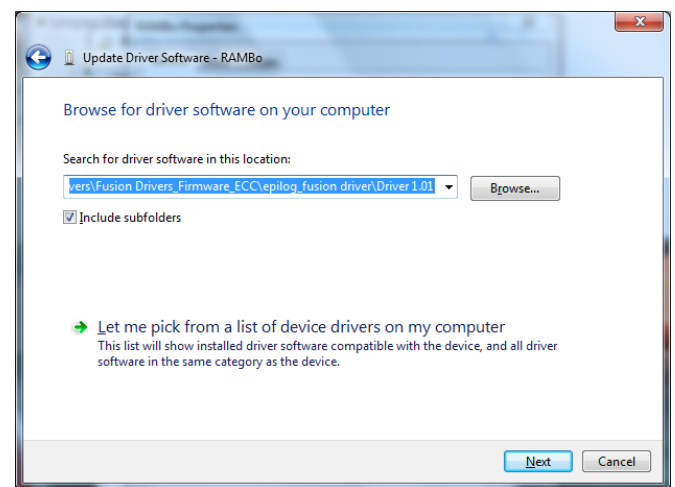


# RAMBo DRIVER INSTALLATION(PC ONLY)

**6** A fourth window will appear. Select "Browse my computer for driver software."

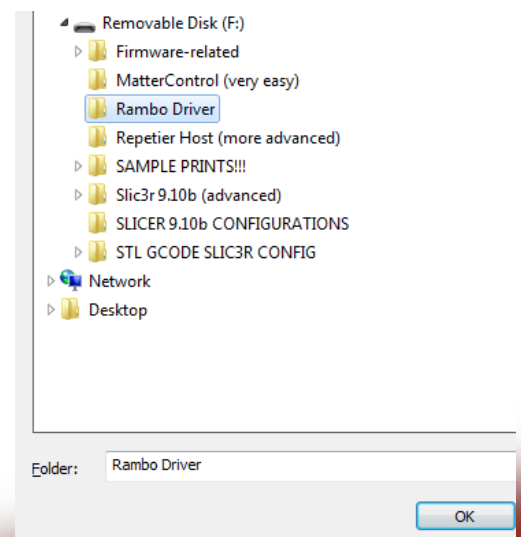
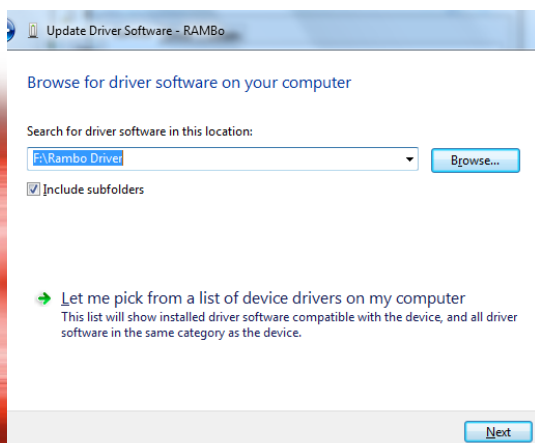


**7** Select the "Browse" button.



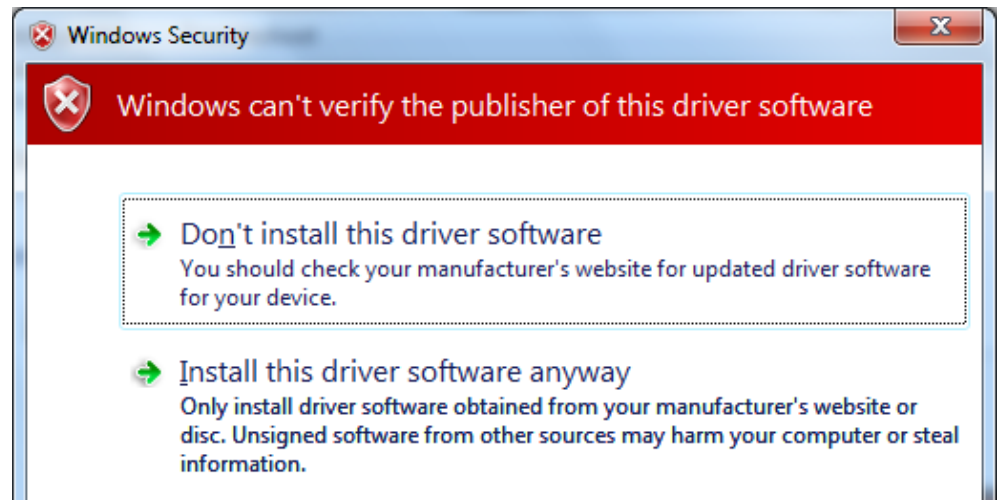
**8** Browse for the Airwolf USB stick. Select the folder "Rambo Driver" and select "OK."

**9** The window will close and return to the "search for driver" screen.



# RAMBo DRIVER INSTALLATION(PC ONLY)

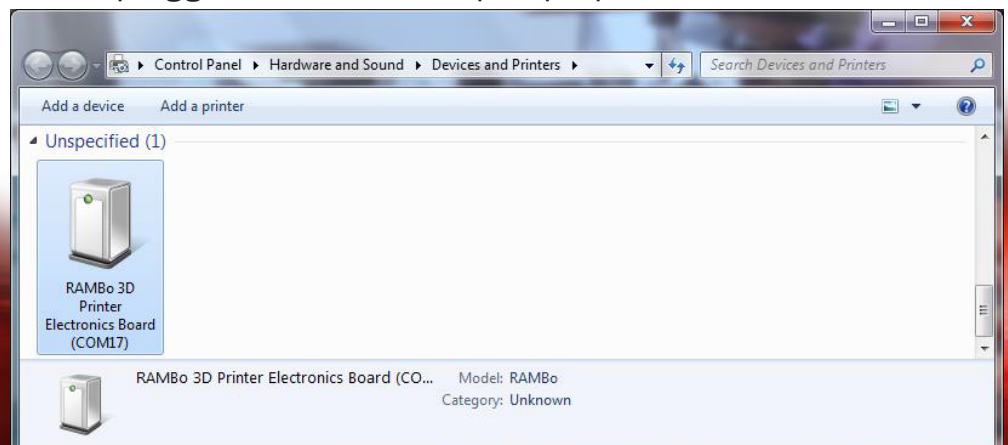
**10** Another screen may appear and say “Windows can’t verify the publisher of this driver software.” Select “Install this driver software anyway.”



**11** If installed correctly, this is the screen you should see. Select “Close -> Close,” and “OK.”



**12** Now in your “Devices and Printers,” under “Unspecified,” this screen should show. If installed correctly, you will see a COM number. The “(COM17” is dependent on what USB port on the computer the printer is plugged into. Yours may display a different COM number.



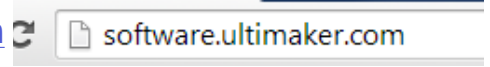


# SOFTWARE INSTALLATION: CURA

## Introduction to Cura:

Cura will be your slicing engine for printing. First it will be set up for single head printing and then set up for dual head printing.

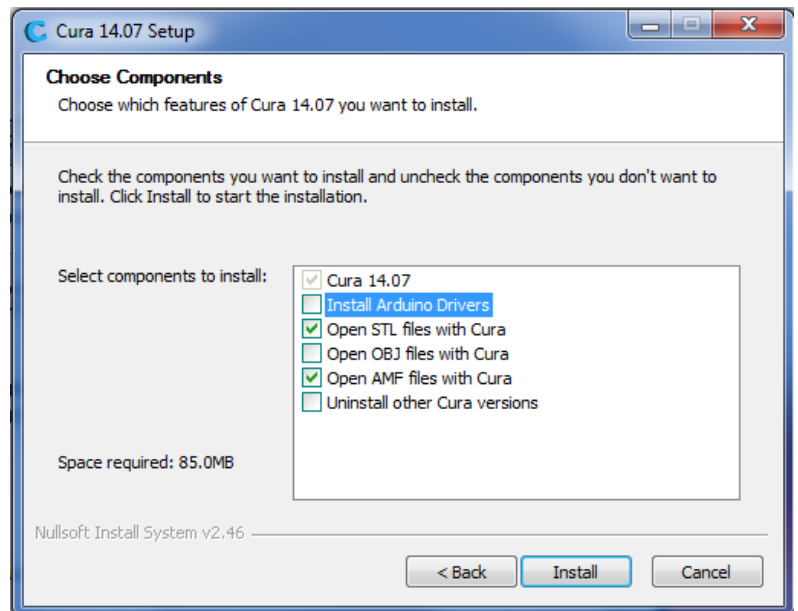
**1** Download Cura. Visit <http://www.software.ultimaker.com>



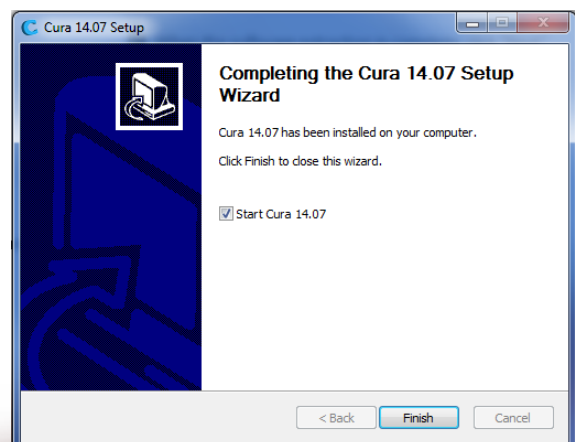
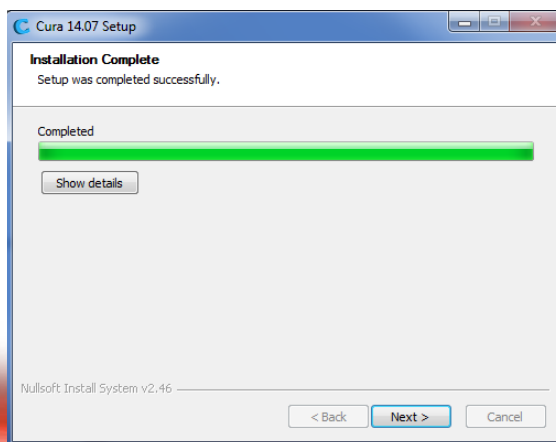
**2** Launch Cura Installer



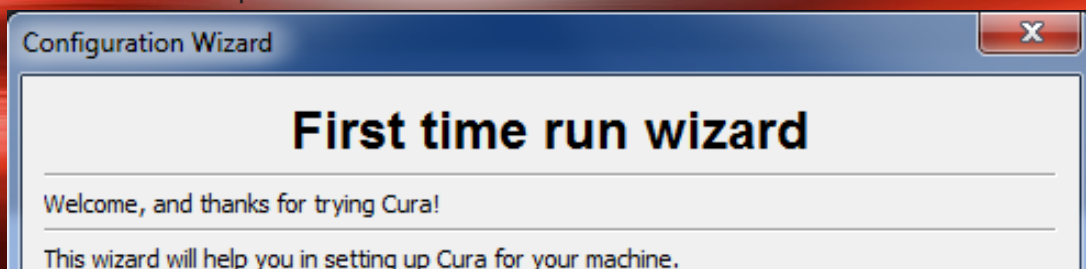
**3** Choose which file types you would like Cura to open by default. Make sure you have "STL" and "AMF" checked. Uncheck "Install Arduino drivers." Click Install.



**4** When the software extraction is complete, click "Next." Then click "Finish."

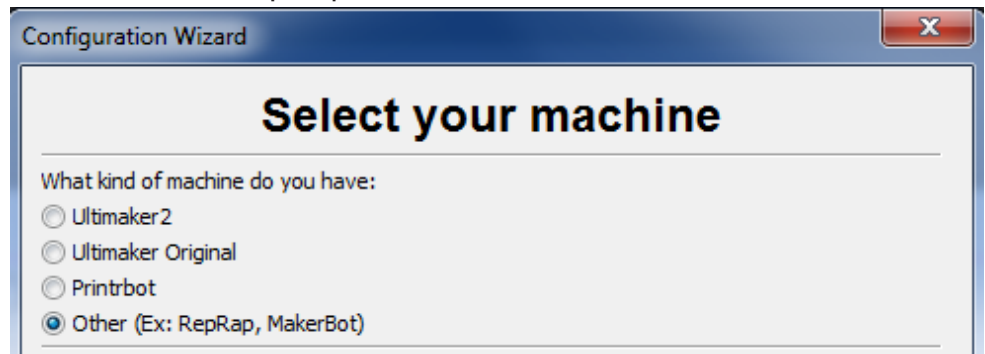


**5** Open Cura. This will open the "First time run wizard" window. Click "Next."

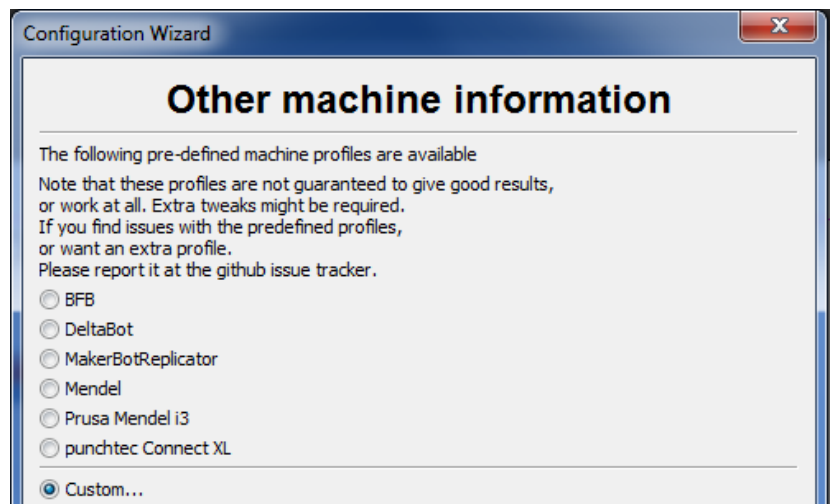


# SOFTWARE INSTALLATION: CURA

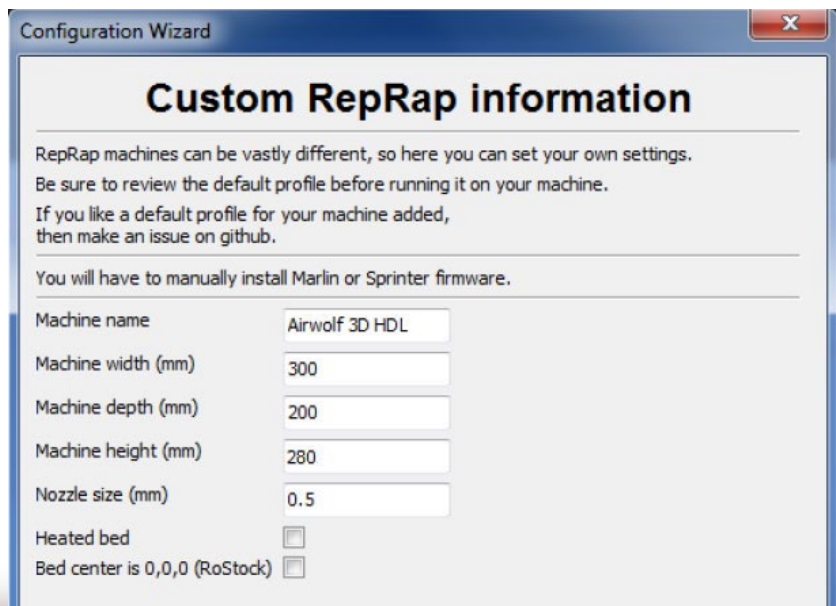
**6** Select Your machine: Select "Other (Ex: RepRap, MakerBot)" then click "Next."



**7** Other machine information:  
Select "Custom...", then click "Next."



**8** Machine Specifications: Fill in data according to the picture then click "Finish."



# SOFTWARE INSTALLATION: REPETIER HOST

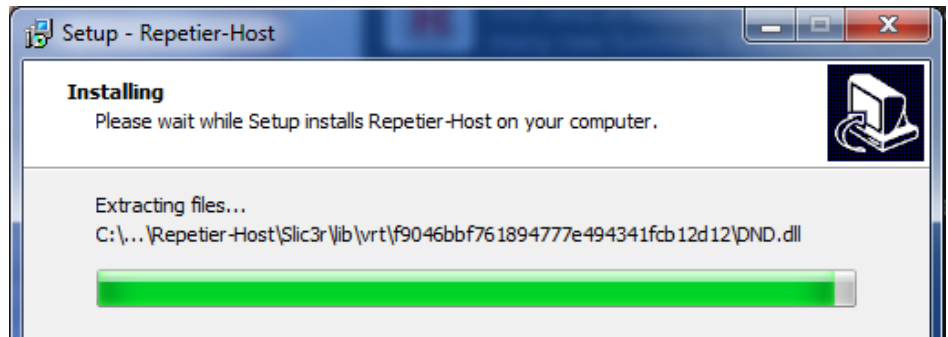
**1** Download Repetier Host.

Visit <http://www.repetier.com/download/>

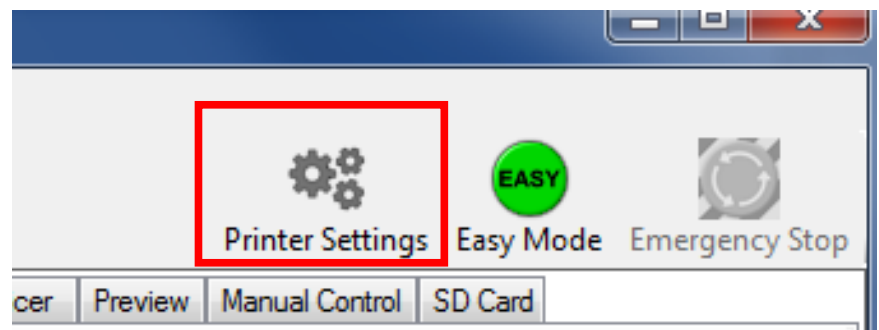


**Repetier-Host Windows 1.00 RC2**

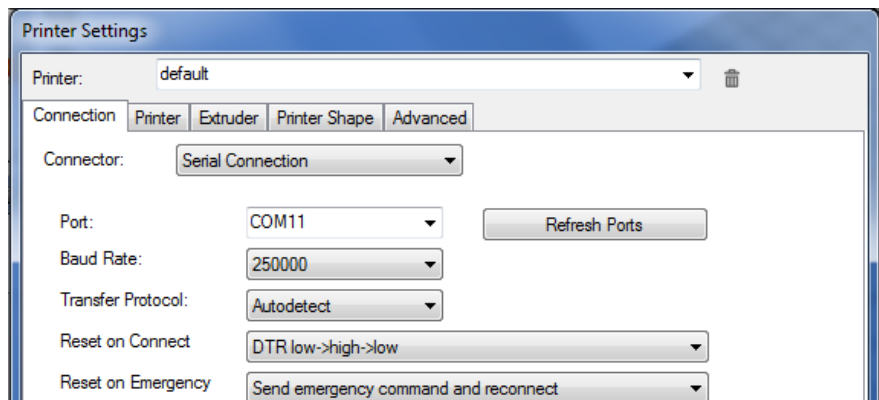
**2** Run the Install File. Once the installation is complete, click "Finish."



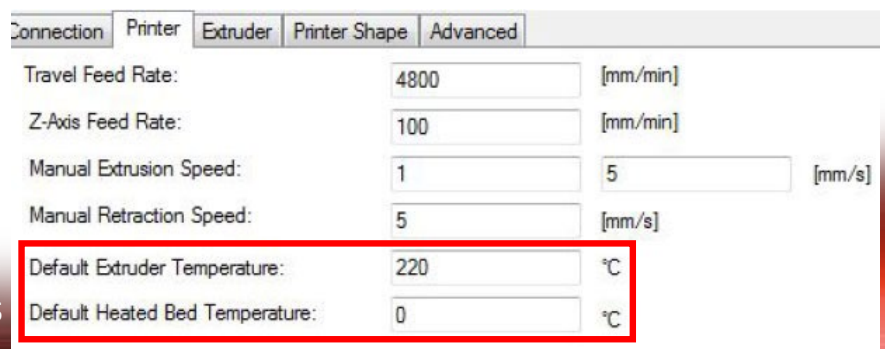
**3** Open Repetier Host. Click "Printer Settings" in the upper right menu. A new window will now open with the "Connection" tab active.



**4** Name the printer. Replace "Default" with a new printer name (i.e. HDL). While still in the "Connections" tab, also change the Baud Rate to 250,000.



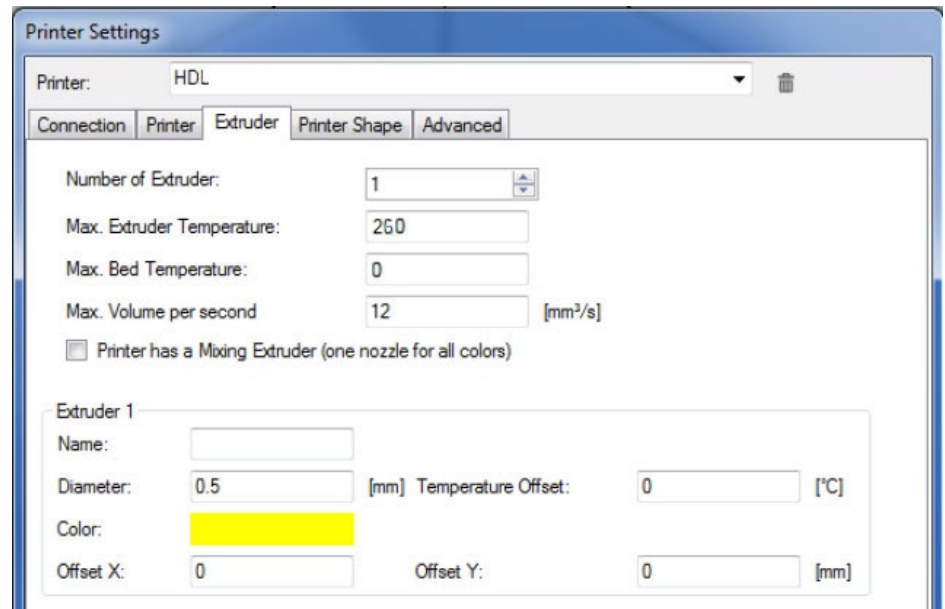
**5** Click on the "Printer" tab, then change the "Default Extruder Temperature" to 220C, and the "Default Bed Temperature" to 0C. Manual Extrusion Speed: 1 & 5 mm/s  
1: TPU and other soft materials  
5: PLA Materials





# SOFTWARE INSTALLATION: REPETIER HOST

**6** Designate the number of Extruders. Click on the “Extruder” tab, then select “1” under “Number of extruder.” Change the diameter of “Extruder 1” to .5 mm.



**7** Click on the “Printer Shape” tab. Set the “X Max” to 300, and the “Y Max” to 200. This sets the maximum travel the head is able to reach in these directions. For the print area, set the Width to 300, the Depth to 200, and the Height to 280. Click “Apply” and “OK” to save the settings as default.

