

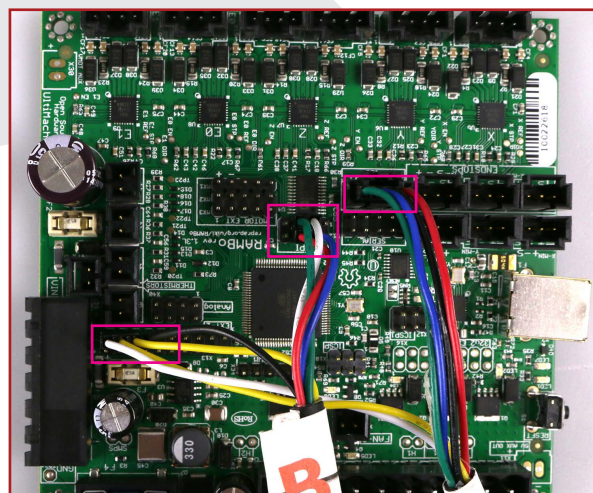
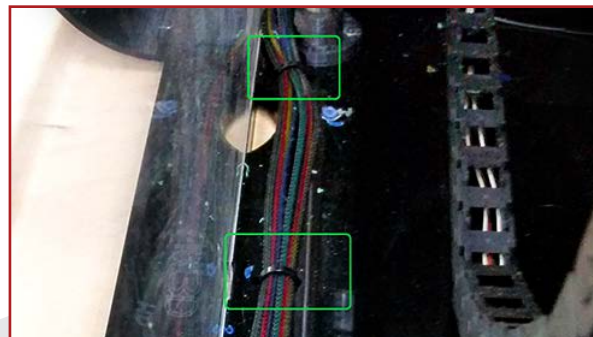
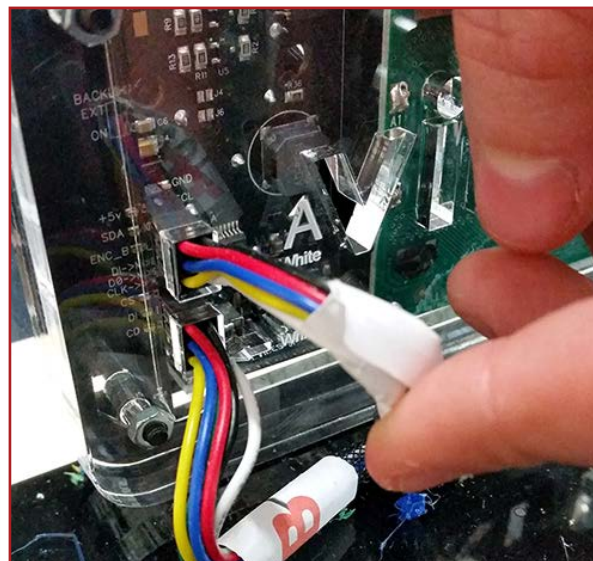
V2 VIKI SCREEN UPGRADE



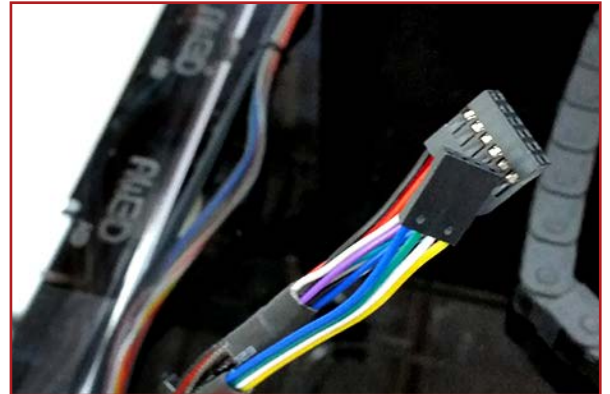
The following will instruct you on how to replace the v1 viki screen with the v2.

Process:

- 1) Remove the v1 viki wiring from the front panel.
These wires are in two connector groups.
- 2) Remove the six M6 screws from the front and back panel of the printer.
- 3) Cut the cable ties holding the wiring to the printer.
- 4) Remove the v1 viki wiring from the RAMBo Board.



- 5)** Remove old wiring from the printer and feed the new wiring in it's place. The new wiring will have two connector groups that need to be fed towards the new viki screen.



- 6)** Install the new front panel.

- 7)** The new viki has multiple acrylic layers.

The solid panel will be the back.

The slot for wiring should be on the left. (when facing the back)



This image shows the thin panel followed by the solid panel.

The 3D printed piece should be on the front panel.



- 8)** Insert the viki into the acrylic paneling. The 3D printed piece will fit around the perimeter of the viki.



9) Place the viki in the printer's front panel. Insert screws through the front and secure with nuts on the back.

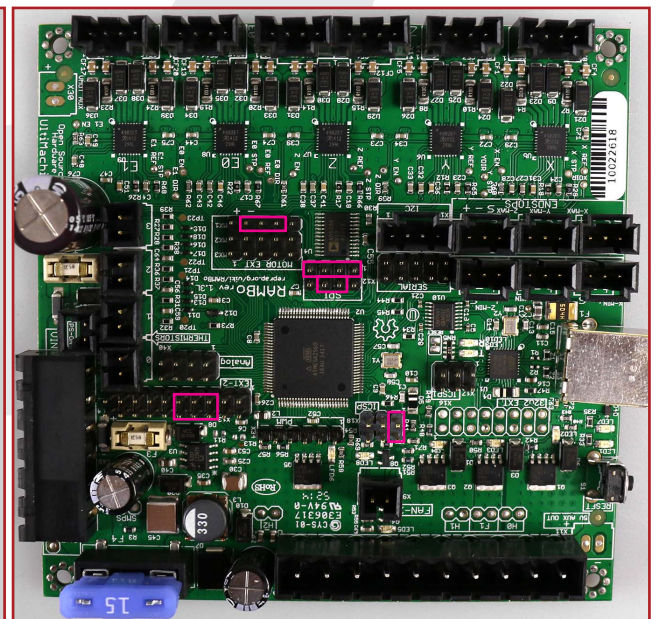
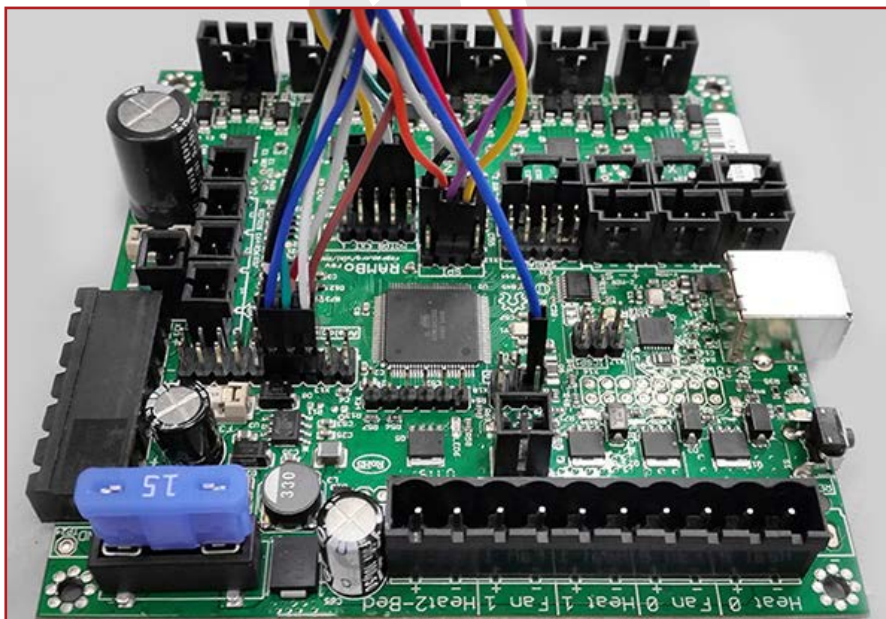


10) Plug in wiring to back of viki. The larger connector will be the upper plug with the white wire on top. The smaller connector will be the lower plug with the blue wire on top.



RAMBo Board Wiring

11) Plug in viki wiring to the RAMBo Board as seen below.

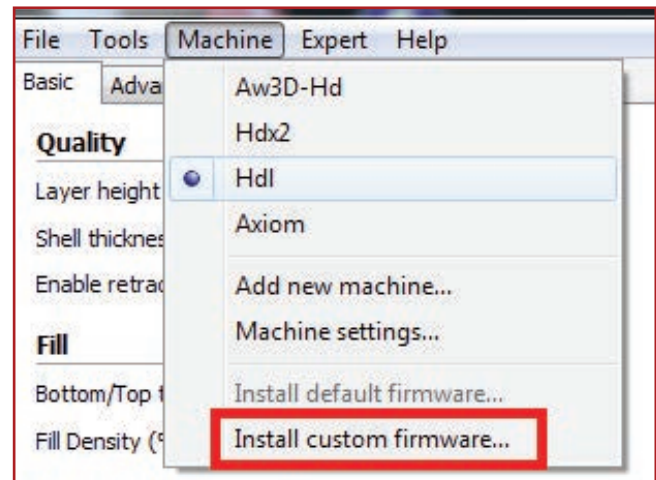


Firmware Update

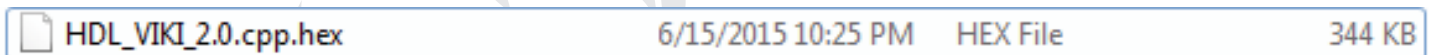
Firmware update is required for use of the new VIKI.

- 1) Plug in the provided USB flash drive into your computer. If you do not have this USB, you can find the firmware file **(your printer model)_Viki_2.0.cpp.hex** by visiting **airwolf3d.freshdesk.com** and navigating to your printers Public Dropbox."
- 2) Plug in your printer and turn it on. Connect the printer to your computer via USB cable.

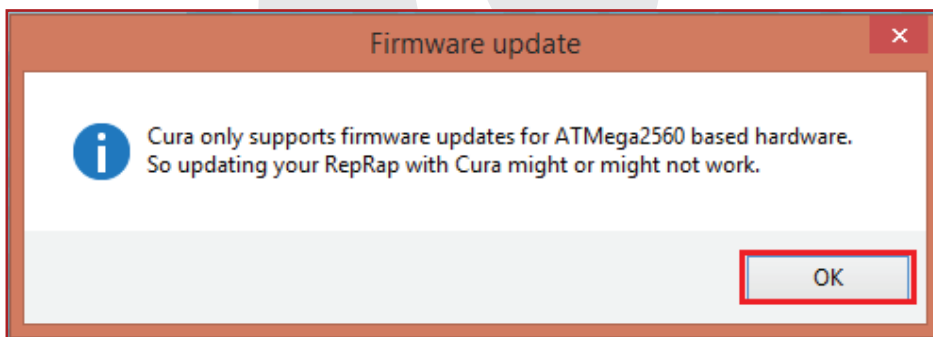
- 3) Open up Cura. Click "Machine" on the menu bar and click "Install custom firmware..."



- 4) Navigate to the .hex file you downloaded from the Dropbox in step 1 and open it.



- 5) Click "OK" if a notification pops up regarding updating RepRap with Cura.



- 6) We highly recommend running the calibration rectangle print once the firmware has been installed correctly. The calibration rectangle print can be found at airwolf3d.freshdesk.com and navigating to your printers Public Dropbox.

Turn your printer on and check that everything is working properly. If everything is ok, install the back panel.